

THERMOBUS^o

suitable air



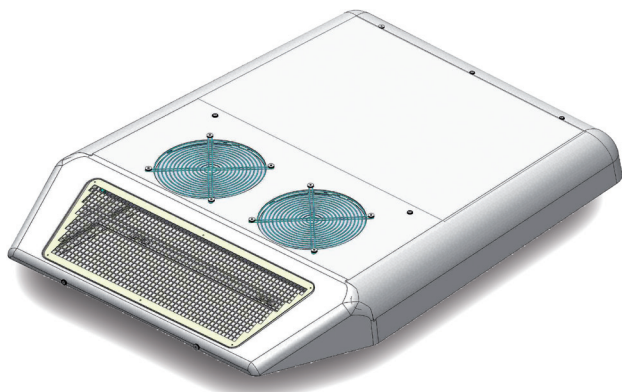
S

35 years experience
in bus climate system

Roof top systems

Equipos de techo

RT 12



Cooling capacity — 12 kW - BTU 40.000
Capacidad frigorífica

Total Power consumption — 12 Volt 64 A
Consumo eléctrico

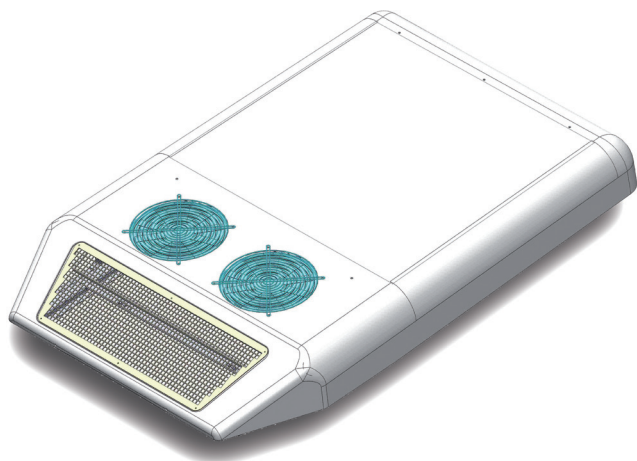
Peso — 50 Kg

Evaporator air volume — 1.820 m³/ h
Caudal de aire

Dimension — 1.600 - 1.228 - 160
(length - wide - height in mm)

Compressor — TM16 - SD7H15
Compresor

RT 12 Tropical



Cooling capacity — 13 kW - BTU 44.000
Capacidad frigorífica

Heating capacity — 16 kW - BTU 55.000
Capacidad de calefacción

Total Power consumption — 108 A (12 Volt)
Consumo eléctrico 54 A (24 Volt)

Peso — 60 Kg

Evaporator air volume — 3.600 m³/ h
Caudal de aire

Dimension — 1.925 - 1.228 - 160
(length - wide - height in mm)

Compressor — TM16 - SD7H15 - TM21
Compresor

Cooling capacity — 16 kW - BTU 55.000
Capacidad frigorífica

Heating capacity — 30 kW - BTU 102.000
Capacidad de calefacción

Total Power consumption — 75 A (24 Volt)
Consumo eléctrico

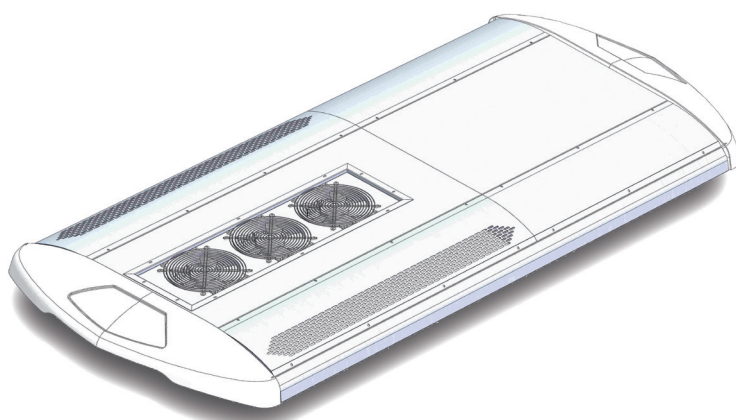
Peso — 88 Kg

Evaporator air volume — 4.500 m³/h
Caudal de aire

Dimension — 2.200 – 1.675 – 220
(length – wide – height in mm)

Compressor — TM21 – TM31
Compresor

RT 18



Available with condenser and evaporator brushless fans

Cooling capacity — 18 kW - BTU 61.000
Capacidad frigorífica

Heating capacity — 37 kW - BTU 125.000
Capacidad de calefacción

Total Power consumption — 85 A (24 Volt)
Consumo eléctrico

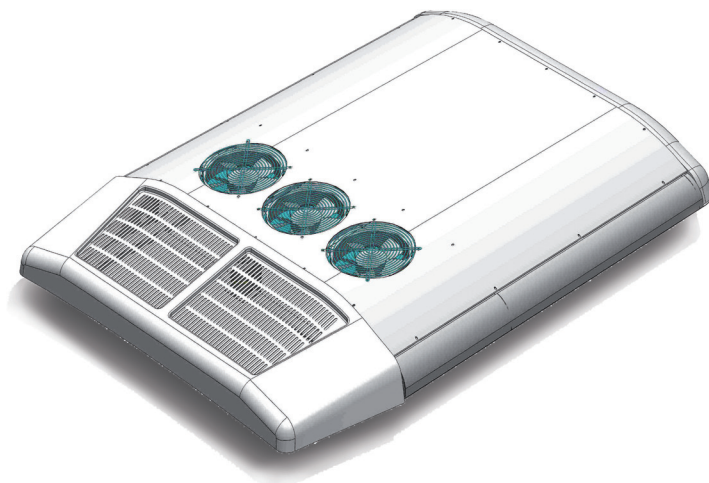
Peso — 110 Kg

Evaporator air volume — 4.520 m³/h
Caudal de aire

Dimension — 1.810 – 1.985 – 190
(length – wide – height in mm)

Compressor — TM31
Compresor

RT 14 EV



Cooling capacity — 18 kW - BTU 61.000
Capacidad frigorífica

Heating capacity — 30 kW - BTU 102.000
Capacidad de calefacción

Total Power consumption — 85 A (24 Volt)
Consumo eléctrico

Peso — 140 Kg

Evaporator air volume — 4.520 m³/h
Caudal de aire

Dimension — 3.110 – 1.720 – 212
(length – wide – height in mm)

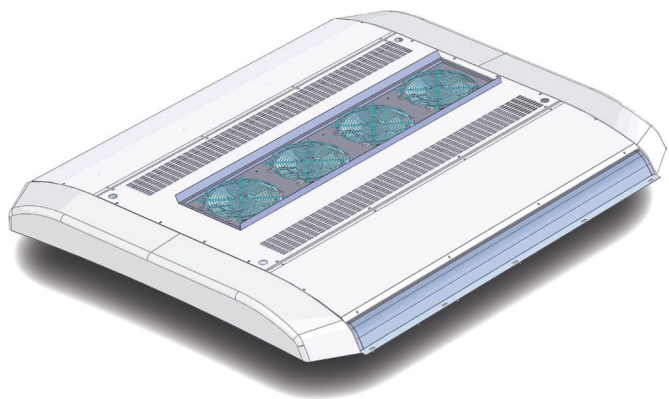
Compressor — TM31
Compresor

RT 20



Available with condenser and evaporator brushless fans

RT 28



Cooling capacity — 28 kW - BTU 96.000
Capacidad frigorífica

Heating capacity — 50 kW - BTU 170.000
Capacidad de calefacción

Total Power consumption — 120A (24 Volt)
Consumo eléctrico

Peso — 140 Kg

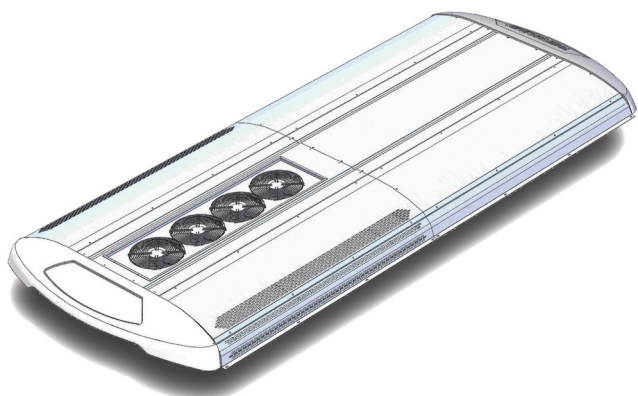
Evaporator air volume — 6.800 m³/ h
Caudal de aire

Dimension — 2.210 – 1.985 - 190
(length – wide – height in mm)

Compressor — BOCK FKX40/560K
Compresor

Available with condenser and evaporator brushless fans

RT 35



Cooling capacity — 35kW - BTU 120.000
Capacidad frigorífica

Heating capacity — 50 kW - BTU 170.000
Capacidad de calefacción

Total Power consumption — 120 A (24 Volt)
Consumo eléctrico

Peso — 200 Kg

Evaporator air volume — 6.800 m³/ h
Caudal de aire

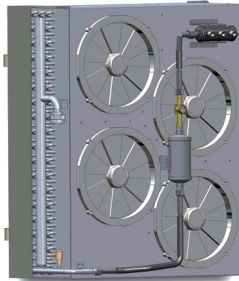
Dimension — 4.270 – 1.820 - 200
(length – wide – height in mm)

Compressor — BOCK FKX40/560K – 655K
Compresor

Available with condenser and evaporator brushless fans

Split systems Equipos integrados

Condensers



Cooling capacity — 30 kW - BTU 103.000
Capacidad frigorífica

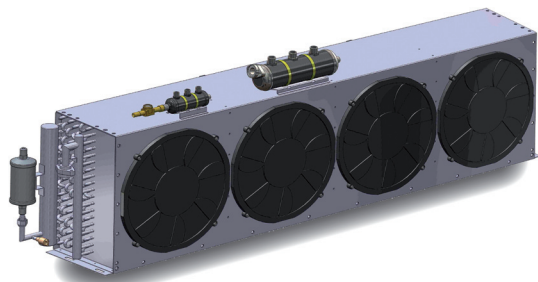
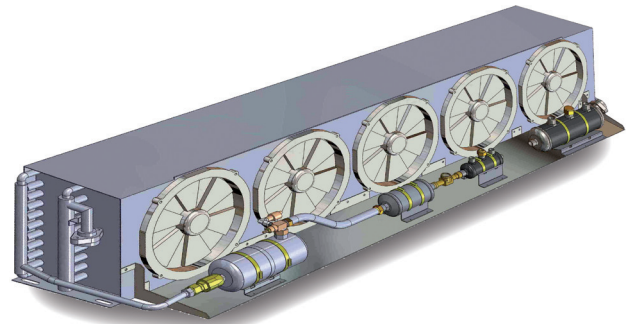
Total Power consumption — 40 A
Consumo eléctrico

Condenser air volume — 8.200 m³/ h
Caudal de aire

Cooling capacity — 32 kW - BTU 112.000
Capacidad frigorífica

Total Power consumption — 50 A
Consumo eléctrico

Condenser air volume — 8.300 m³/ h
Caudal de aire

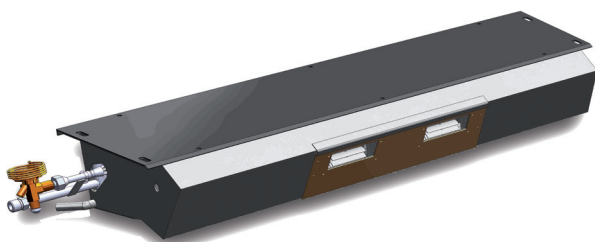


Cooling capacity — 40 kW - BTU 137.000
Capacidad frigorífica

Total Power consumption — 40 A
Consumo eléctrico

Condenser air volume — 9.500 m³/ h
Caudal de aire

Evaporators



Cooling capacity — 6kW - BTU 20.000
Capacidad frigorífica

Heating capacity — 8 kW - BTU 27.000
Capacidad de calefacción

Total Power consumption — 12 A
Consumo eléctrico

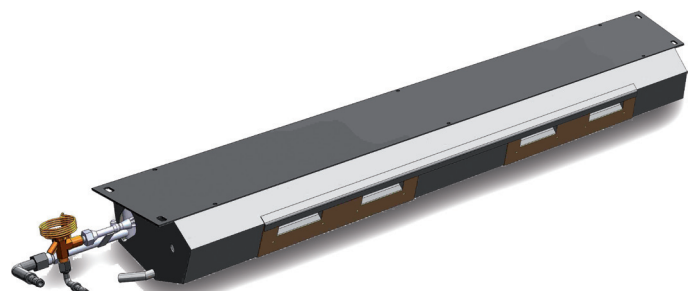
Evaporator air volume — 1.200 m³/ h
Caudal de aire

Cooling capacity — 11kW - BTU 37.000
Capacidad frigorífica

Heating capacity — 12 kW - BTU 41.000
Capacidad de calefacción

Total Power consumption — 24 A
Consumo eléctrico

Evaporator air volume — 2.400 m³/ h
Caudal de aire



Special customized

Monorail solution

RT 30



Cooling capacity ————— 28 kW - BTU 96.000
Capacidad frigorífica

Total Power consumption ————— 110 A (24 Volt)
Consumo eléctrico

Peso ————— 160 Kg

Evaporator air volume ————— 6.000 m³/ h
Caudal de aire

Dimension ————— 2.510 – 2.500 - 193
(length – wide – height in mm)

Compressor ————— Horizontal scroll
Compresor



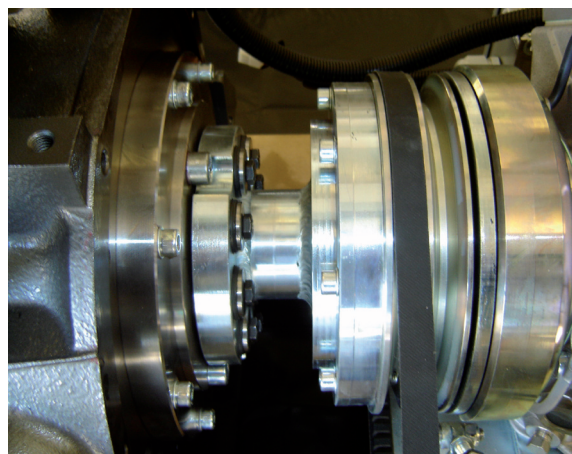
Power pack solution

3 cylinders diesel engine - water cooled output

Power 30 hp (2.400 rpm)

Compressor Bock FKX40/560K – 660K

Alternator 100 A 24 Volt



Heating systems

Compact

Compact 400

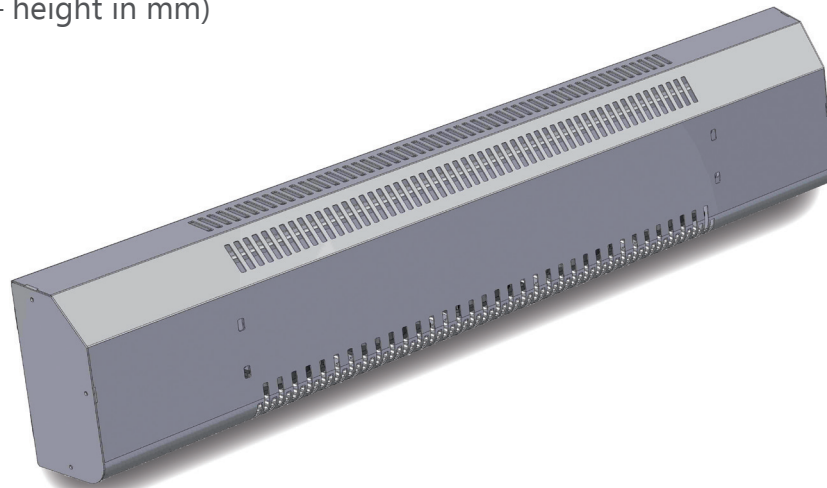
Compact 500

Heating capacity ————— 4.7kW - BTU 16.000 ————— 6kW - BTU 20.000
Capacidad de calefacción

Total Power consumption ————— 0.96 A (12 Volt) ————— 1.2 A (12 Volt)
Consumo eléctrico ————— 0.48 A (24 Volt) ————— 0.6 A (24 Volt)

Air volume ————— 260 m³/ h ————— 330 m³/ h
Caudal de aire

Dimension ————— 708 - 90 - 180 ————— 808 - 90 - 180
(length - wide - height in mm)



Driver defrost system S600

Cooling capacity ————— 5 kW - BTU 17.000
Capacidad frigorífica

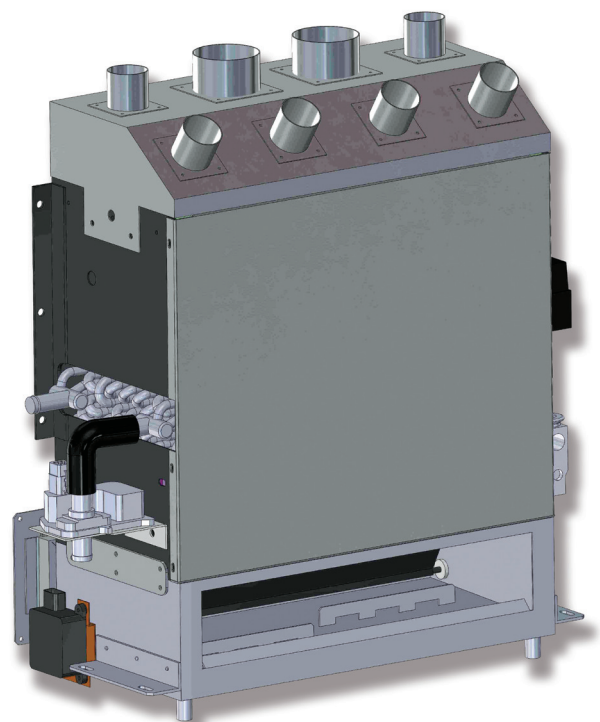
Heating capacity ————— 20 kW - BTU 68.000
Capacidad de calefacción

Total Power consumption ————— 12A (24Volt)
Consumo eléctrico

Peso ————— 13 Kg

Evaporator air volume ————— 1.100 m³/ h
Caudal de aire

Dimension ————— 630 - 225 - 645
(length - wide - height in mm)



www.thermobus.it



THERMOBUS^o
suitable air

Via Milano, 2
24040 Bonate Sopra (BG) - Italy
Tel. +39 035 4997266
Fax +39 035 4997473
info@thermobus.it